

Worksoft Certify® Cross-Platform Automated Functional Testing

Historical Challenges with Test Automation

- Complex scripts and custom coding increase deployment times and maintenance costs
- Test cases are sensitive to application changes
- High ramp-up costs for new deployments and during major upgrades
- Difficult to validate business processes that span diverse technology stacks
- Technical solutions excluded business process experts and business analysts

Solution Highlights

- Designed for business process experts and business analysts
- Patented data model that eliminates coding and is more resilient to application changes
- Single user interface supports a variety of technologies and interfaces
- Integration and certification with third-party enterprise test management solutions

SAP® Certified
Integration with SAP NetWeaver®

Ready for
IBM | Rational.
software

About Worksoft

Worksoft® develops innovative enterprise lifecycle management solutions that significantly reduce deployment times, reduce risk of application failures and improve business agility.

The Promise of Automated Testing

Software functional test automation promised to reduce testing time, lower deployment costs and improve quality. However, many functional testing solutions introduced additional development and maintenance costs due to proprietary scripting languages that required custom coding to support enterprise applications. Additionally, these software products were designed for technical people instead of the business and subject matter experts that understand the business processes and workflows.

Next Generation of Automated Testing

Worksoft was first to market with a solution designed for business analysts that is powerful enough to validate cross-platform business processes without requiring coding. Worksoft Certify is an automated functional testing solution optimized for enterprise applications—supporting both packaged and custom applications.

Worksoft Certify eliminates custom coding and programming, a requirement of most legacy test automation products, making it fast and easy to implement and maintain. Rather than generating scripts or code, Certify uses a patented data-model design to validate business process workflows. This rapid and easy-to-use product generates comprehensive business process tests that are more resilient to application changes.

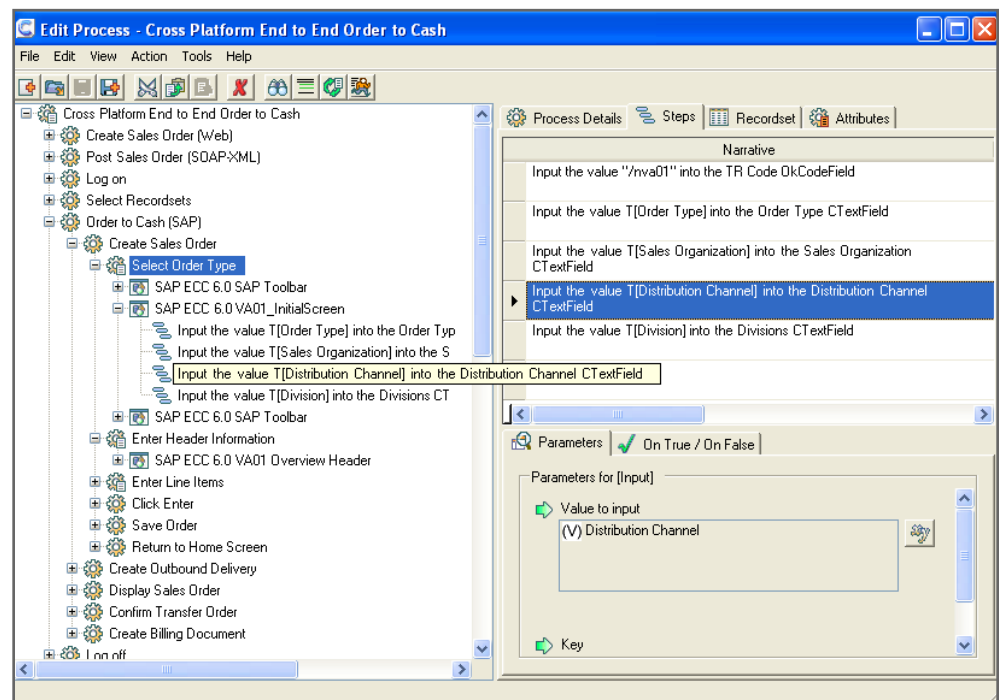


Figure 1: Easy-to-use interface provides cross-platform business process validation

Supported Interfaces

- SAP® Applications*
- HTML
- Java
- Microsoft® Visual Basic*
- Microsoft® .NET*
- Service Oriented Architecture (SOA)*
- TC SDK/C++*
- UNIX*
- Mainframe interfaces

*Sold separately

System Requirements

- Pentium® 4 PC with 2 GHz or greater (or 100% compatibles)
- Windows Vista®, Windows XP® Professional, Window Server® 2003
- Microsoft® Internet Explorer® v6 or above
- Microsoft® .NET Framework v3.5 SP1
- 2 GB memory
- 750 MB of disk space

Database Requirements

- Microsoft® Windows Enterprise Server 2003 R2 or later
- Microsoft® SQL Server 2005 SP3 or Microsoft® SQL Server 2008
- 8 GB minimum memory for dedicated servers
- 16 GB minimum memory for virtual servers

Contact Us

Worksoft Inc.
15851 Dallas Parkway Suite 855
Addison, Texas 75001
(main) 214.239.0400
(toll) 866.836.1773
info@worksoft.com
sales@worksoft.com
www.worksoft.com

Solution Benefits

- **Accelerates delivery of new functionality** – Provides an automated testing solution that can be used to validate end-to-end business processes when making critical changes due to new business requirements or technical upgrades.
- **Lowens total cost of ownership** – Reduces time and costs by using a patented technology that eliminates coding and provides resiliency to application changes.
- **Simplifies validation for the business process analyst** – Enables business owners to define and execute business process tests that span multiple and diverse platforms.
- **Automates generation of documentation** – Automatically generates business process documentation for training, development, audits and compliance projects.

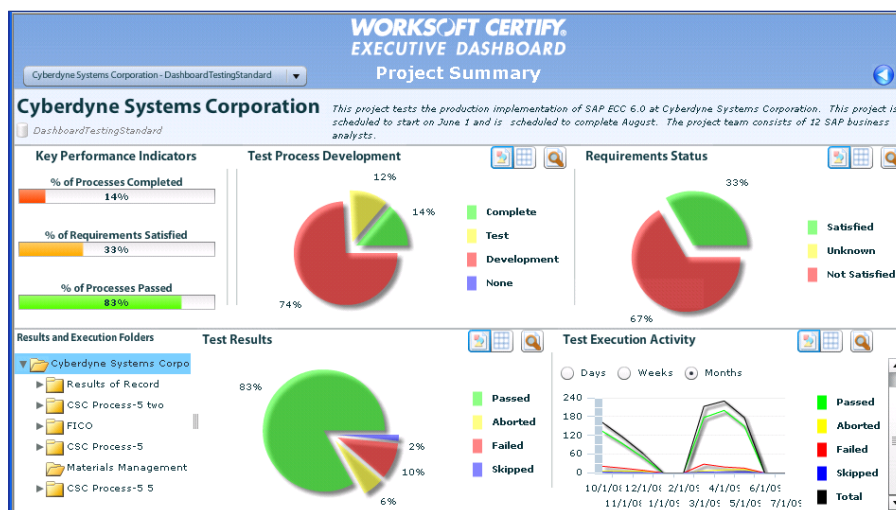


Figure 2: Certify test results and test processes aggregated in web-based dashboard

Key Features

- Central data repository ensures a common, scalable application knowledge base that promotes use and reuse of components as well as encourages team collaboration.
- Broad interface library supports a variety of platforms and operating systems including HTML, .NET, Visual Basic, Java, UNIX, C++, AS/400, iSeries, Mainframe/3270 and web-services interfaces (SOA).
- Integrated test data management feature enables self-sufficient business process testing by embedding representative test data into the test itself. This eliminates many test data management needs and simplifies the process.
- Extensive reporting features quantify project status, test requirements and test execution results. Reports can be exported to a number of common desktop applications to provide flexibility and customization.
- Incorporates Certify Connect™ middleware enabling third party, bi-directional integration with enterprise test management solutions such as HP Quality Center, IBM Rational® Quality Manager and SAP® Solution Manager.
- Complemented by other value-add lifecycle management solutions from Worksoft including Certify Executive Dashboard™, Certify Business Process Procedure™ and Certify eSignature™.

Worksoft and Worksoft Certify are registered trademarks of Worksoft, Inc. All other trademarks and names are property of their respective owners.